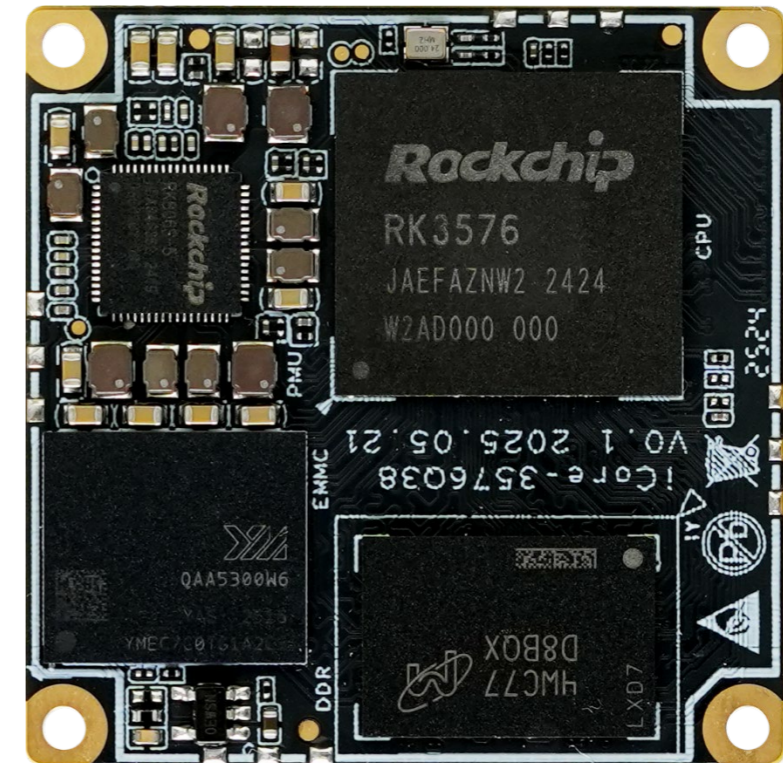




iCore-3576Q38

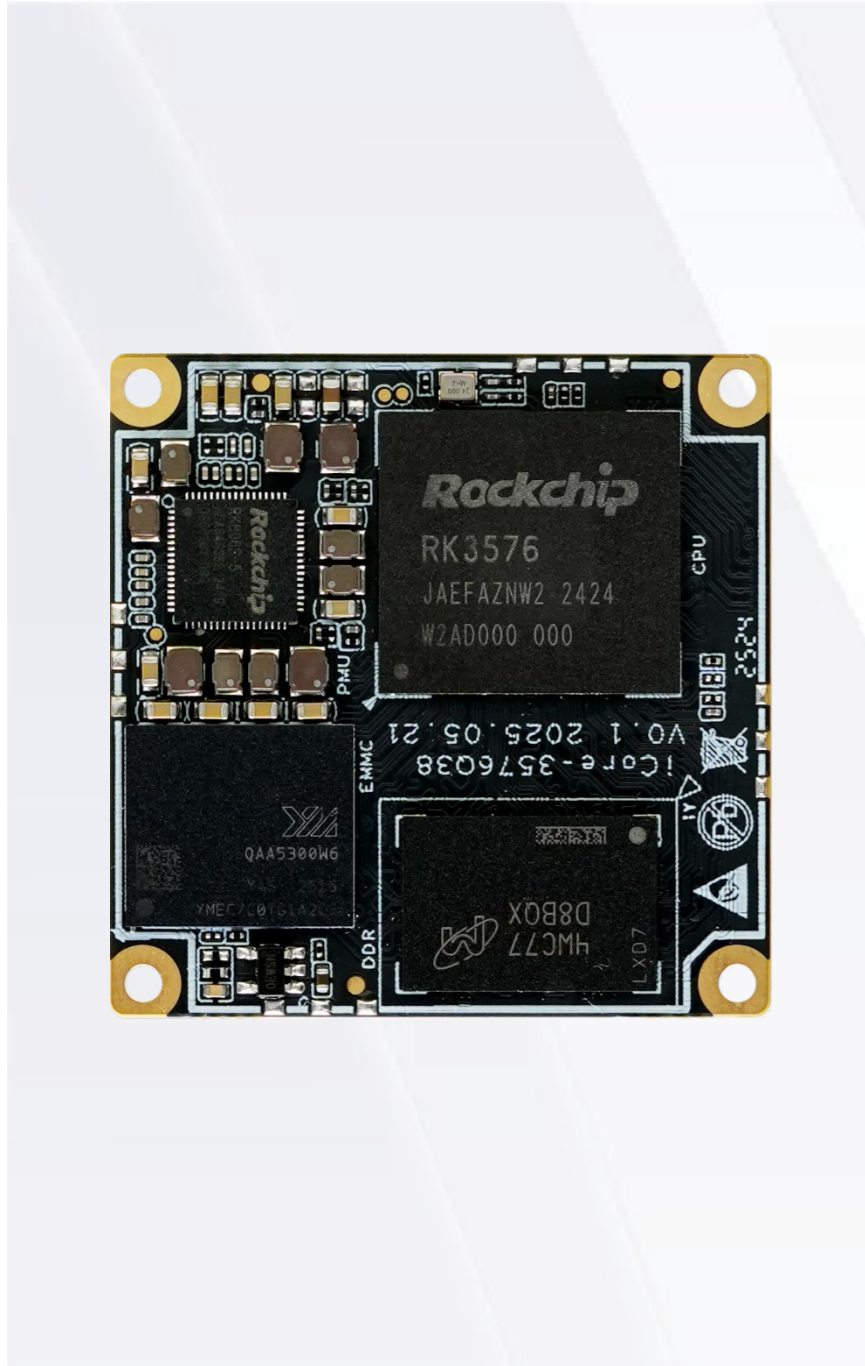
Mini AI Core Board



V0.1 2025-9-11

T-CHIP INTELLIGENCE TECHNOLOGY

Product features



High-performance Octa-core 64-bit AIOT processor, RK3576

RK3576, the new octa-core 64-bit AIOT processor, features a big.LITTLE architecture (4xA72 +4xA53), an advanced lithography process, and a frequency of up to 2.2 GHz. It ensures strong support for high-performance computing and multitasking.



4K@120fps high frame rate video decoding

It supports 8K@30fps/4K@120fps decoding (H.265/HEVC, VP9, AVS2, and AV1), 4K@60fps decoding (H.264/AVC), and 4K@60fps encoding (H.265/HEVC and H.264/AVC).



Built-in 6TOPS computing power NPU

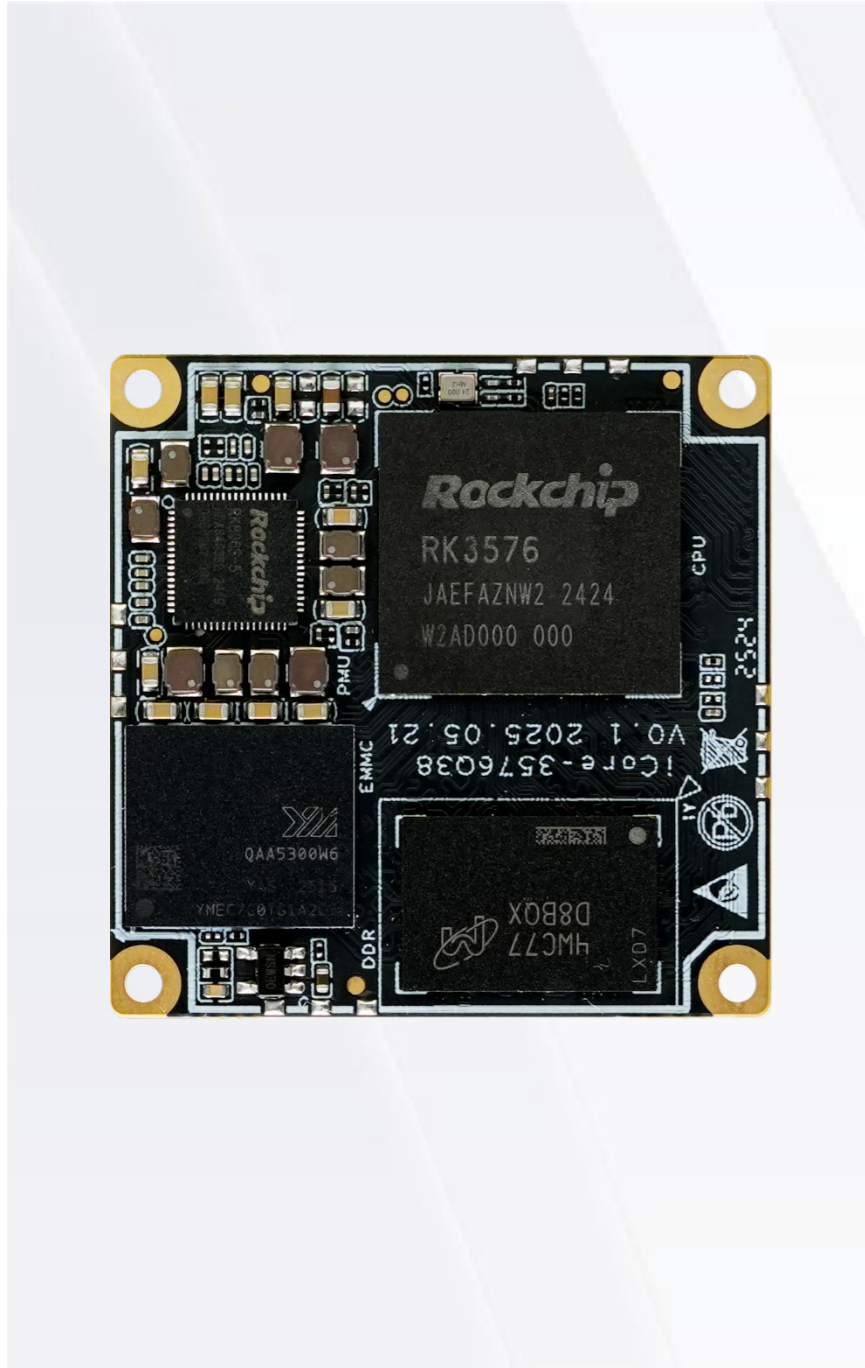
The NPU has a computing power of up to 6TOPS, supports INT4/INT8/INT16/FP16/BF16/TF32 operations, supports dual-core collaborative or independent work, and supports multi-task and multi-scenario parallelism. It supports the real-time object detection algorithm YOLO based on deep learning, and supports the private deployment of large language models.



New features for industry

It has new industrial features such as real-time network, Flexbus, hardware resource isolation, and DSMC to meet the needs of different industrial applications.

Product features



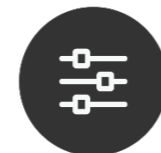
BTB interface design, 38mm×38mm small size

The core board is designed with BTB interface and high-speed industrial-grade connectors, which has super transmission capacity, high-frequency transmission stability, and convenience without welding; The core board is only 38mm×38mm, which is small in size and saves more valuable space.



Support RTLinux and multiple operating systems

It supports RTLinux kernel and has excellent real-time performance. Support Android 14, Linux OS, and Buildroot. These provide safe and stable systems for product research and production.



Abundant expansion interfaces

It provides a rich array of expansion interfaces such as CAN FD, I3C, UART, I2C, SAI, PWM, SPI, PCIe2.1, SATA3.0, USB3.0, MIPI-CSI, HDMI2.1, DP1.4, SDIO3.0, GPIO to meet peripheral expansion needs for various applications.



Wide range of application scenarios

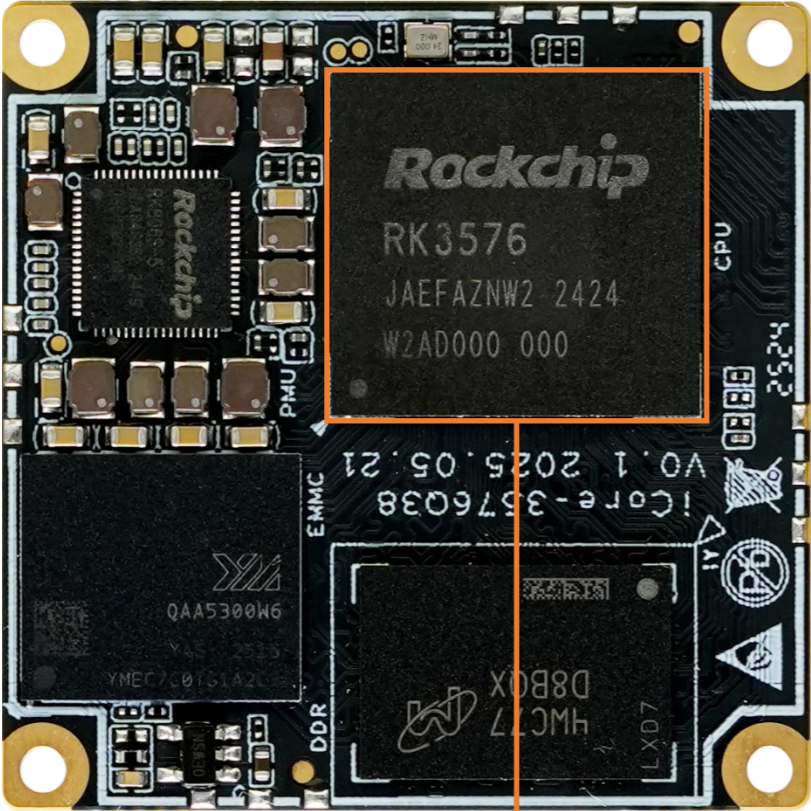
It is widely used in edge computing, large model localization, machine vision, industrial cameras, industrial control hosts, automotive electronics and other industries.

Specifications

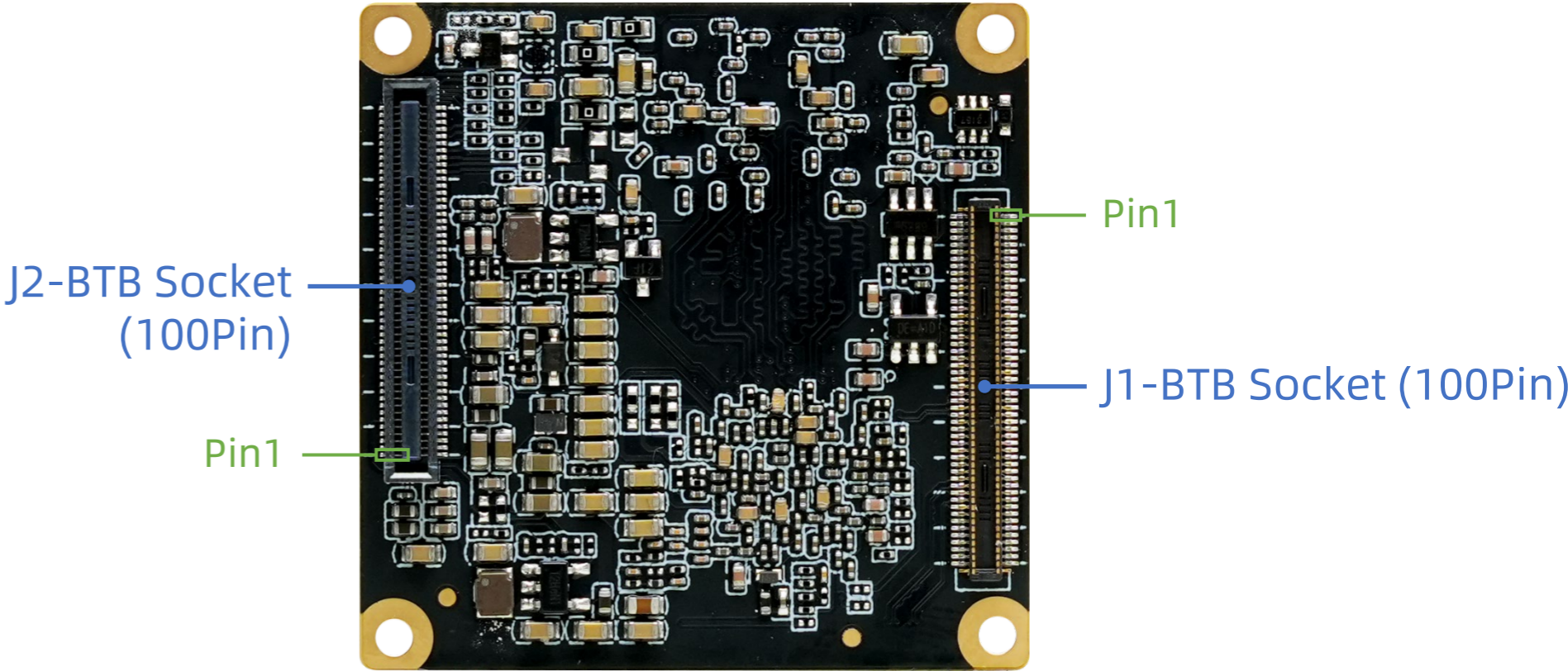


Specifications			
Basic Specifications	SOC	Rockchip RK3576	
	CPU	Octa-core 64-bit processor (4×A72 + 4×A53) with a maximum frequency of 2.2GHz	
	GPU	G52 MC3@1GHz, support OpenGL ES 1.1/2.0/3.2, OpenCL 2.0, Vulkan 1.1, embedded with high-performance 2D acceleration hardware	
	NPU	6 TOPS NPU, It supports INT4/INT8/INT16/FP16/BF16/TF32 operations, supports dual-core collaborative or independent work, and supports multi-task and multi-scene parallelism	
	ISP	Built-in 16 million pixel ISP, support low-light noise reduction, support RGB-IR sensor, support up to 120dB HDR, AI-ISP to improve low-noise image effect	
	Decoding/Encoding	Decoding: 8K@30fps/4K@120fps (H.265/HEVC, VP9, AVS2, AV1), 4K@60fps (H.264/AVC) Encoding: 4K@60fps (H.265/HEVC, H.264/AVC) Image codec: 4K@60fps MJPG	
	RAM	LPDDR4/LPDDR4x (4GB/8GB/16GB optional)	
	Storage	eMMC (16GB/32GB/64GB/128GB/256GB optional), UFS2.0 (Optional)	
	Power	5.0V (voltage tolerance ± 5%)	
	Power consumption	Normal: 0.8W(5V/160mA), Max: 5W(5V/1000mA), Min(Sleep): 0.475W(5V/95mA)	
	OS	It supports RTLinux kernel and has excellent real-time performance, which is widely used in industrial application scenarios Support Android14, Linux OS, Buildroot, provide a safe and stable system environment for product research and production It has new industrial features such as real-time network, Flexbus, hardware resource isolation, and DSMC to meet the needs of different industrial applications	
	AI performance	Support the privatization deployment of ultra-large-scale parametric models under the Transformer architecture, such as Gemma series, ChatGLM series, Qwen series, Phi series and other large language models It supports traditional network architectures such as CNN, RNN, and LSTM, and supports the import and export of RKNN models; Support a variety of deep learning frameworks, including TensorFlow, TensorFlow Lite, PyTorch, Caffe, ONNX and Darknet. It also supports the development of custom operators Support Docker container management technology	
		It supports the real-time object detection algorithm YOLO (You Only Look Once), which is fast and real-time compared with traditional object detection methods, and can accurately identify and locate multiple target objects in images or videos, powering AI applications	
	Interface type	BTB (2 × BTB Socket(100Pin))	
	Size	38.0mm × 38.0mm × 5.68mm	
	Weight	≈10g	
Environment	Operating Temperature: -20°C- 60°C, Storage Temperature: -20°C ~ 70°C, Storage Humidity: 10% ~ 90%RH (non-condensing)		
Interface Specifications	Internet	2 × GMAC (Providing RMII or RGMII interfaces to connect external Ethernet PHY; Supports 10/100/1000 Mbps speeds), expandable WiFi, Bluetooth, 4G, 5G through USB, PCIE, SDIO, UART	
	Video input	1 × MIPI DPHY CSI (Supports MIPI V1.2 version; 1 × 4 Lanes or 2 × 2 Lanes) 1 × MIPI DCPHY CSI RX (DPHY supports V2.0 version with 4Lane/2Lane/1Lane modes; CPHY supports V1.1 version with 0/1/2 Trio modes)	
	Video output	1 × HDMI2.1(4096×2160@120Hz)/eDP1.3(4096×2160@60Hz, supports 1Lane/2Lane/4Lane modes) 1 × DP1.4 (4096×2160@120Hz) 1 × EBC Output interface (support E-ink EPD (Electronic Paper Display), 2560×1920)	
	Audio	4 × SAI (4T/4R) , supports I2S/TDM/PCM mode, and supports sampling rates up to 192KHz	
	PCIe/SATA	1 × PCIe 2.1/SATA 3.1/USB 3.2 Gen1 Combo interfaces 1 × PCIe 2.1/SATA 3.1 Combo interfaces	
	USB	1 × USB3.2 Gen1 OTG0 (Multiplexed with DP1.4) 1 × USB3.2 Gen1 OTG1 (Multiplexed with PCIe 2.1/SATA 3.1)	
	SDIO	2 × SDIO3.0	
	PWM	14 × PWM	
	SPI	4 × SPI (Supports serial master and serial slave modes, software configurable)	
	I2C	9 × I2C (Supports 7-bit and 10-bit address modes, data rates up to 100kbps in standard mode and up to 400kbps in fast mode)	
	I3C	1 × I3C (I2C compliant, SDR mode supported, up to 10 devices supported)	
	UART	12 × UART (Support automatic flow control mode, support RS485 function)	
	CAN	2 × CAN FD (Supports 8192 bit receive FIFO)	
	SARADC	3 × SARADC + 1 × SARADC (boot only), supports 12-bit resolution, up to 1MS/s sampling rate	

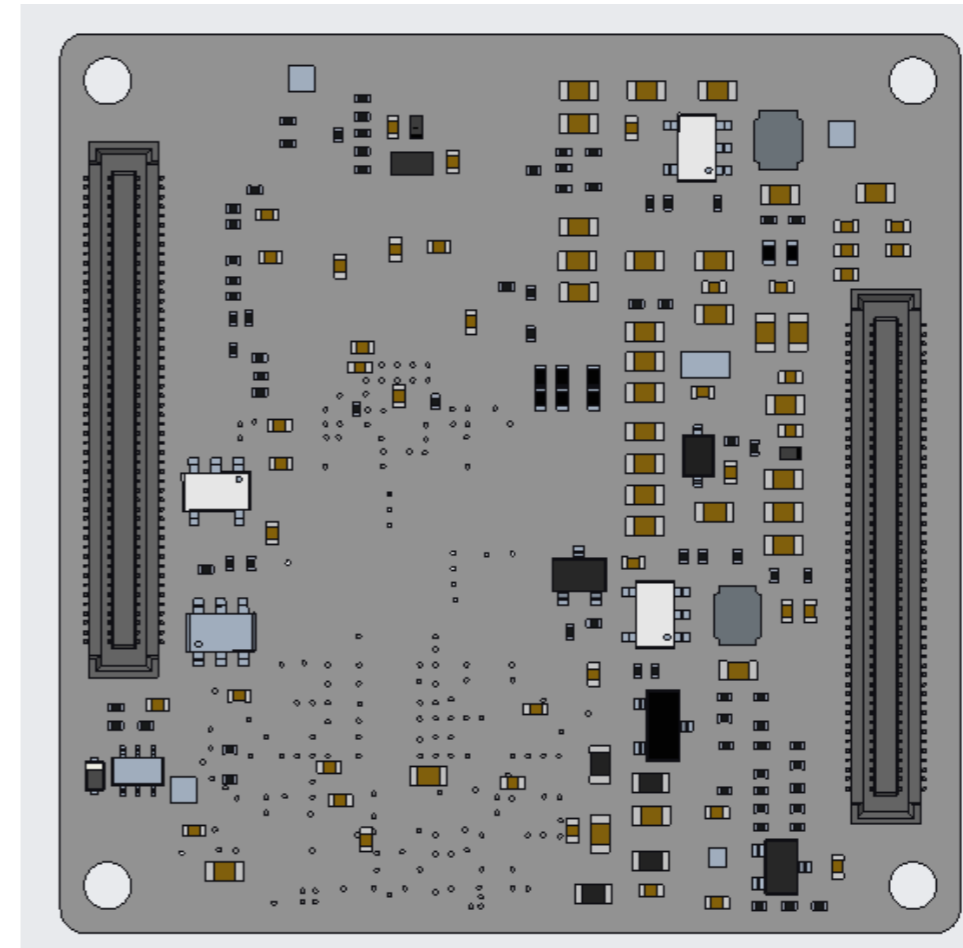
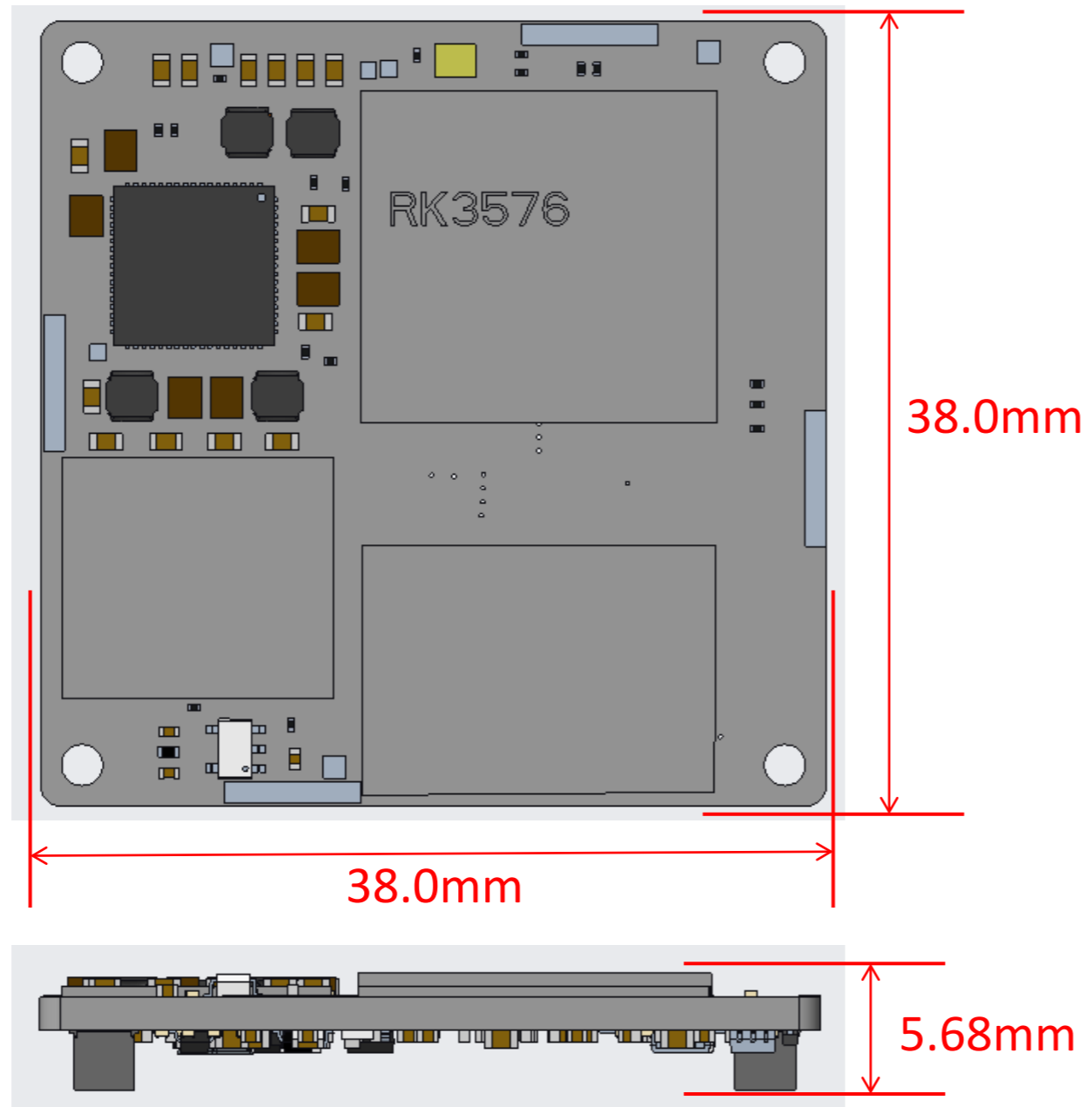
Core board Interface description



Rockchip RK3576
Main frequency up to 2.2GHz



Core board Dimension





Interface definition

① : Pad types: I = input, O = output, I/O = input/output (bidirectional), G= Ground ,
P = power supply , DOWN = Internal pull down , UP = Internal pull UP L = Lowe Level H = High level”

PIN	iCORE-3576Q38 pin definition (J1)	RK3576 Pin NO.	Pad type	IO Power domain	IO Pull	Function for Main BOARD (EXT-ICORE-3576Q38)	Defual function description
1	CLK_32K_IN/CLK0_32K_OUT/I2C6_SCL_M0/GPIO0_A2_d	1U23	I/O	1.8V	DOWN	32KOUT_RTC2SOC	32KOUT_RTC INPUT To SOC
3	UART0_RX_M0/JTAG_TMS_M1/GPIO0_d5_u	AA28	I/O	3.3V	UP	UART0_RX_M0_DEBUG	UART0_RX_M0_DEBUG
5	UART0_TX_M0/JTAG_TCK_M1/GPIO0_D4_u	1U24	I/O	3.3V	UP	UART0_RX_M0_DEBUG	UART0_RX_M0_DEBUG
7	SARADC_VIN0_BOOT	A25	I	1.8V		SARADC_VIN0_BOOT	ADC0 INPUT (MASKROM Model)
9	SARADC_IN1/RECOVERY	1A22	I	1.8V		SARADC_VIN1_KEY/RECOVERY	ADC1 INPUT (LOADER Model)
11	SARADC_IN3	1C19	I	1.8V		SARADC_VIN3_HP_HOOK	ADC3 INPUT
13	SARADC_IN4	1E18	I	1.8V		SARADC_VIN4	ADC4 INPUT
15	PWM2_CH0_M1/UART9_TX_M2/CAN0_TX_M1/I2C2_SCL_M3/HDMI_TX_SCL/DSM_AUD_RP_M1/GPIO4_C2_d	AL2	I/O	3.3V	DOWN	POW_HOLD	POW_HOLD,Active H
17	PWM0_CH1_M1/UART11_RX_M2/EDP_TX_HPDI_M0/I2C7_SDA_M3/PCIE1_CLKREQN_M3/HDMI_TX_HPDI_M0/DSM_AUD_LN_M1/GPIO4_C1_d	AK2	I	3.3V	DOWN	UART11_RX_M2	UART11_RX_M2
19	PWM1_CH5_M1/UART11_TX_M2/SPI4_CSN1_M0/I2C7_SCL_M3/PCIE1_WAKEN_M3/HDMI_TX_CEC_M0/SAI4_MCLK_M2/DSM_AUD_LP_M1/GPIO4_C0_d	AK3	I/O	3.3V	DOWN	UART11_TX_M2	UART11_TX_M2
21	PWM2_CH1_M1/UART9_RX_M2/CAN0_RX_M1/I2C2_SDA_M3/HDMI_TX_SDA/DSM_AUD_RN_M1/GPIO4_C3_d	1AE2	I/O	3.3V	DOWN	USBCC_INT_L	USBCC_INT_L
23	PWM2_CH3_M1/CAN1_RX_M1/SPI4_CLK_M0/I2C6_SDA_M3/VP2_SYNC_OUT/SAI4_SCLK_M2/GPIO4_C7_d	AJ1	I/O	3.3V	DOWN	I2C6_SDA_M3	I2C6_SDA_M3
25	PWM2_CH2_M1/CAN1_TX_M1/SPI4_MISO_M0/I2C6_SCL_M3/SATA0_ACTLED_M1/PCIE0_CLKREQN_M3/VP1_SYNC_OUT/SAI4_SDI_M2/GPIO4_C6_d	1AE1	I/O	3.3V	DOWN	I2C6_SCL_M3	I2C6_SCL_M3
27	GND		G			GND	GND



Interface definition

29	PCIE0_REFCLKN (OUTPUT)	1N23	O	-		NC	PCIE0_REFCLKN
31	PCIE0_REFCLKP (OUTPUT)	1N22	O	-		NC	PCIE0_REFCLKP
33	PCIE0_RXN/SATA0_RXN	R29	I	-		NC	PCIE0_RXN
35	PCIE0_RXP/SATA0_RXP	R28	I	-		NC	PCIE0_RXP
37	PCIE0_TXN/SATA0_TXN	P28	O	-		NC	PCIE1_TX0_N
39	PCIE0_TXP/SATA0_TXP	P29	O	-		NC	PCIE1_TX0_P
41	GND		G			GND	GND
43	PCIE1_TXP/SATA1_TXP/USB3_OTG1_SSTXP	N28	O	-		NC	USBSS0_TX_P
45	PCIE1_TXN/SATA1_TXN/USB3_OTG1_SSTXN	N29	O	-		NC	USBSS0_TX_N
47	PCIE1_RXP/SATA1_RXP/USB3_OTG1_SSRXP	M29	I	-		NC	USBSS0_RX_P
49	PCIE1_RXN/SATA1_RXN/USB3_OTG1_SSRXN	M28	I	-		NC	USBSS0_RX_N
51	PCIE1_REFCLKP (OUTPUT)	1L23	O	-		NC	PCIE1_REFCLKP
53	PCIE1_REFCLKN (OUTPUT)	1M23	O	-		NC	PCIE1_REFCLKN
55	GND		G			GND	GND
57	MIPI_DPHY_CSI0_RX_D0P/MIPI_CPHY_CSI_RX_TRIO0_B	AK20	I/O	-		NC	MIPI_DPHY_CSI0_RX_D0P/MIPI_CPHY_CSI_RX_TRIO0_B
59	MIPI_DPHY_CSI0_RX_D0N/MIPI_CPHY_CSI_RX_TRIO0_A	AL20	I/O	-		NC	MIPI_DPHY_CSI0_RX_D0N/MIPI_CPHY_CSI_RX_TRIO0_A
61	MIPI_DPHY_CSI0_RX_D1P/MIPI_CPHY_CSI_RX_TRIO1_A	AK21	I/O	-		NC	MIPI_DPHY_CSI0_RX_D1P/MIPI_CPHY_CSI_RX_TRIO1_A
63	MIPI_DPHY_CSI0_RX_D1N/MIPI_CPHY_CSI_RX_TRIO0_C	AL21	I/O	-		NC	MIPI_DPHY_CSI0_RX_D1N/MIPI_CPHY_CSI_RX_TRIO0_C



Interface definition

65	MIPI_DPHY_CSI0_RX_CLKP/MIPI_CPHY_CSI_RX_TRIO1_C	AK22	I/O	-		NC	MIPI_DPHY_CSI0_RX_CLKP/MIPI_CPHY_CSI_RX_TRIO1_C
67	MIPI_DPHY_CSI0_RX_CLKN/MIPI_CPHY_CSI_RX_TRIO1_B	AL22	I/O	-		NC	MIPI_DPHY_CSI0_RX_CLKN/MIPI_CPHY_CSI_RX_TRIO1_B
69	MIPI_DPHY_CSI0_RX_D2P/MIPI_CPHY_CSI_RX_TRIO2_B	AK23	I/O	-		NC	MIPI_DPHY_CSI0_RX_D2P/MIPI_CPHY_CSI_RX_TRIO2_B
71	MIPI_DPHY_CSI0_RX_D2N/MIPI_CPHY_CSI_RX_TRIO2_A	AL23	I/O	-		NC	MIPI_DPHY_CSI0_RX_D2N/MIPI_CPHY_CSI_RX_TRIO2_A
73	MIPI_DPHY_CSI0_RX_D3P/NO_USE	AK24	I/O	-		NC	MIPI_DPHY_CSI0_RX_D3P/NO_USE
75	MIPI_DPHY_CSI0_RX_D3N/MIPI_CPHY_CSI_RX_TRIO2_C	AL24	I/O	-		NC	MIPI_DPHY_CSI0_RX_D3N/MIPI_CPHY_CSI_RX_TRIO2_C
77	GND		G			GND	GND
79	HDMI_TX_SBDN/EDP_TX_AUXN	2U12	O	-		NC	HDMI_TX_SBDP
81	HDMI_TX_SBDP/EDP_TX_AUXP	2T12	O	-		NC	HDMI_TX_SBDN
83	HDMI_TX_D3N/EDP_TX_D3N	AK26	O	-		NC	HDMI_TX_D3N
85	HDMI_TX_D3P/EDP_TX_D3P	AL26	O	-		NC	HDMI_TX_D3P
87	HDMI_TX_D0N/EDP_TX_D0N	AK27	O	-		NC	HDMI_TX_D0N
89	HDMI_TX_D0P/EDP_TX_D0P	1AE24	O	-		NC	HDMI_TX_D0P
91	HDMI_TX_D1N/EDP_TX_D1N	AL28	O	-		NC	HDMI_TX_D1N
93	HDMI_TX_D1P/EDP_TX_D1P	AK28	O	-		NC	HDMI_TX_D1P
95	HDMI_TX_D2N/EDP_TX_D2N	AK29	O	-		NC	HDMI_TX_D2N
97	HDMI_TX_D2P/EDP_TX_D2P	AJ28	O	-		NC	HDMI_TX_D2P
99	GND		G			GND	GND



Interface definition

2	GND		G			GND	GND
4	SPDIF_RX0_M0/FLEXBUS0_CSN_M4/UART2_RX_M1/I2C3_SDA_M0/CAN1_RX_M2/GPIO4_B4_d	B8	I/O	3.3V	DOWN	GPIO4_B4_d	GPIO4_B4_d
6	CAN1_TX_M2/PCIE0_CLKREQN_M2/I2C3_SCL_M0/UART2_TX_M1 FLEXBUS0_D15_M1 SPDIF_TX0_M0/GPIO4_B5_d	1A4	I/O	3.3V	DOWN	GPIO4_B5_d	GPIO4_B5_d
8	CAN0_RX_M2/I2C4_SDA_M1/UART6_RX_M0/SPI3_MISO_M2/FLEXBUS0_D14_M1/PDM1_CLK0_M1/SAI4_LRCK_M0/GPIO4_A6_d	1B5	I/O	3.3V	DOWN	GPIO4_A6_d	GPIO4_A6_d
10	CAN0_TX_M2/I2C4_SCL_M1/UART6_TX_M0/SPI3_MOSI_M2/FLEXBUS0_D13_M1/PDM1_SDI3_M1/SAI4_SCLK_M0/GPIO4_A4_d	1C5	I/O	3.3V	DOWN	CAN0_TX_M2	GPIO4_A4_d
12	SAI1_SCLK_M0/FLEXBUS1_CSN_M4/SPI3_CSN0_M2/UART5_RTSN_M1/I2C2_SCL_M2/PWM2_CH4_M1/GPIO4_A3_d	1C6	I/O	3.3V	DOWN	BL_PWM1	GPIO4_A3_d
14	PCIE1_CLKREQN_M2/I2C2_SDA_M2/UART5_CTSN_M1/SPI4_CSN1_M2/FLEXBUS1_D12_M1 SAI1_LRCK_M0/GPIO4_A5_d	1B6	I/O	3.3V	DOWN	GMAC1_RSTn	GPIO4_A5_d
16	USB2_OTG0_VBUSDET	2P3	I	3.3V		USB2_OTG0_VBUSDET	USB2_OTG0_VBUSDET
18	SB2_OTG1_ID	2T9	I	1.8V		NC	SB2_OTG1_ID (RK3576 internal pull-up)
20	PWM0_CH0_M0/UART10_TX_M2/PDM0_CLK0_M0/SAI0_MCLK_M1/GPIO0_C4_d	1W22	I/O	3.3V	DOWN	I2S0_MCLK_M0	I2S0_MCLK_M0
22	I3C0_SDA_PU_M0/UART10_RX_M2/DP_HPDI0_M1/SAI0_SDO0_M1/GPIO0_C5_d	1AA22	I/O	3.3V	DOWN	I2S0_SDO0_M0	I2S0_SDO0_M0
24	SAI0_SDI3_M1/SAI0_SDO1_M1/PDM0_SDI3_M0/I2C4_SDA_M0/GPU_AVS/PWM2_CH0_M0/UART1_RTSEN_M0/GPIO0_D3_d	1AA23	I/O	3.3V	DOWN	GPIO0_D3_d	GPIO0_D3_d
26	SAI0_SDI2_M1/SAI0_SDO2_M1/PDM0_SDI2_M0/I2C4_SCL_M0/CPUBIG_AVS/PWM1_CH5_M0/UART1_CTSN_M0/GPIO0_D2_d	1Y22	I/O	3.3V	DOWN	SYS_LED	SYS_LED
28	SPI0_CSN0_M0/I2C3_SCL_M1/SAI0_SCLK_M1/GPIO0_C6_d	1Y21	I/O	3.3V	DOWN	I2S0_SCLK_TX_M0	I2S0_SCLK_TX_M0
30	SPI0_MOSI_M0/PDM0_SDI0_M0/SAI0_SDI0_M1/GPIO0_D0_d	1W23	I/O	3.3V	DOWN	I2S0_SDI0_M0	I2S0_SDI0_M0
32	SPI0_CLK_M0/I2C3_SDA_M1/SAI0_LRCK_M1/GPIO0_C7_d	1Y23	I/O	3.3V	DOWN	I2S0_LRCK_TX_M0	I2S0_LRCK_TX_M0
34	SPI0_MISO_M0SAI0_SDI1_M1/SAI0_SDO3_M1/PDM0_SDI1_M0/GPIO0_d1_d	AC28	I/O	3.3V	DOWN	SPK_CTRL	SPK_CTRL



Interface definition

36	I2C2_SCL_M0/UART1_TX_M0/NPU_AVS/PWM1_CH4_M0/GPIO0_B7_d	1W24	I/O	3.3V	DOWN	I2C2_SCL_M0	I2C2_SCL_M0
38	I2C2_SDA_M0/UART1_RX_M0/CPULIT_AVS/PWM1_CH3_M0/GPIO0_C0_d	AB29	I/O	3.3V	DOWN	I2C2_SDA_M0	I2C2_SDA_M0
40	REF_CLK1_OUT/I2C1_SCL_M1/UART4_TX_M2/PWM1_CH0_M0/GPIO0_B4_d	AD28	I/O	3.3V	DOWN	GPIO0_B4_d	GPIO0_B4_d
42	REF_CLK2_OUT/I2C1_SDA_M1/UART4_RX_M2/PWM1_CH1_M0/GPIO0_B5_d	AD29	I/O	3.3V	DOWN	GPIO0_B5_d	GPIO0_B5_d
44	GND		G			GND	GND
46	USB2_OTG1_DP	2T4		-		USB2_HOST1_DP	USB2_HOST1_DP
48	USB2_OTG1_DM	2T5		-		USB2_HOST1_DM	USB2_HOST1_DM
50	USB2_OTG0_DP	AK9		-		USB2_OTG0_DP	USB2_OTG0_DP
52	USB2_OTG0_DM	AL9		-		USB2_OTG0_DM	USB2_OTG0_DM
54	GND		G			GND	GND
56	DP_TX_AUXP	2T2		-		NC	NC
58	DP_TX_AUXN	2T3		-		NC	NC
60	USB3_OTG0_SSRX1P/DP_TX_D0P	AK10	I/O	-		USB3_OTG0_SSRX1P/DP_TX_D0P	USB3_OTG0_SSRX1P/DP_TX_D0P
62	USB3_OTG0_SSRX1N/DP_TX_D0N	AL10	I/O	-		USB3_OTG0_SSRX1N/DP_TX_D0N	USB3_OTG0_SSRX1N/DP_TX_D0N
64	USB3_OTG0_SSTX1P/DP_TX_D1P	AL11	I/O	-		USB3_OTG0_SSTX1P/DP_TX_D1P	USB3_OTG0_SSTX1P/DP_TX_D1P
66	USB3_OTG0_SSTX1N/DP_TX_D1N	AK11	I/O	-		USB3_OTG0_SSTX1N/DP_TX_D1N	USB3_OTG0_SSTX1N/DP_TX_D1N
68	USB3_OTG0_SSRX2P/DP_TX_D2P	AK12	I/O	-		USB3_OTG0_SSRX2P/DP_TX_D2P	USB3_OTG0_SSRX2P/DP_TX_D2P
70	USB3_OTG0_SSRX2N/DP_TX_D2N	AL12	I/O	-		USB3_OTG0_SSRX2N/DP_TX_D2N	USB3_OTG0_SSRX2N/DP_TX_D2N



Interface definition

72	USB3_OTG0_SSTX2N/DP_TX_D3N	AK13	I/O	-		USB3_OTG0_SSTX2N/DP_TX_D3N	USB3_OTG0_SSTX2N/DP_TX_D3N
74	USB3_OTG0_SSTX2P/DP_TX_D3P	AL13	I/O	-		USB3_OTG0_SSTX2P/DP_TX_D3P	USB3_OTG0_SSTX2P/DP_TX_D3P
76	GND		G			GND	GND
78	MIPI_DPHY_CSI1_RX_D2P/MIPI_DPHY_CSI2_RX_D0P	AG29	I/O	-		MIPI_DPHY_CSI1_RX_D2P/MIPI_DPHY_CSI2_RX_D0P	MIPI_DPHY_CSI1_RX_D2P/MIPI_DPHY_CSI2_RX_D0P
80	MIPI_DPHY_CSI1_RX_D2N/MIPI_DPHY_CSI2_RX_D0N	AG28	I/O	-		MIPI_DPHY_CSI1_RX_D2N/MIPI_DPHY_CSI2_RX_D0N	MIPI_DPHY_CSI1_RX_D2N/MIPI_DPHY_CSI2_RX_D0N
82	MIPI_DPHY_CSI1_RX_D3P/MIPI_DPHY_CSI2_RX_D1P	AH29	I/O	-		MIPI_DPHY_CSI1_RX_D3P/MIPI_DPHY_CSI2_RX_D1P	MIPI_DPHY_CSI1_RX_D3P/MIPI_DPHY_CSI2_RX_D1P
84	MIPI_DPHY_CSI1_RX_D3N/MIPI_DPHY_CSI2_RX_D1N	AH28	I/O	-		MIPI_DPHY_CSI1_RX_D3N/MIPI_DPHY_CSI2_RX_D1N	MIPI_DPHY_CSI1_RX_D3N/MIPI_DPHY_CSI2_RX_D1N
86	MIPI_DPHY_CSI2_RX_CLKP	1AD21	I/O	-		NC	NC
88	MIPI_DPHY_CSI2_RX_CLKN	1AD22	I/O	-		NC	NC
90	MIPI_DPHY_CSI1_RX_CLKP	1AC22	I/O	-		MIPI_DPHY_CSI1_RX_CLKP	MIPI_DPHY_CSI1_RX_CLKP
92	MIPI_DPHY_CSI1_RX_CLKN	1AC23	I/O	-		MIPI_DPHY_CSI1_RX_CLKN	MIPI_DPHY_CSI1_RX_CLKN
94	MIPI_DPHY_CSI1_RX_D1P	AF29	I/O	-		MIPI_DPHY_CSI1_RX_D1P	MIPI_DPHY_CSI1_RX_D1P
96	MIPI_DPHY_CSI1_RX_D1N	AF28	I/O	-		MIPI_DPHY_CSI1_RX_D1N	MIPI_DPHY_CSI1_RX_D1N
98	MIPI_DPHY_CSI1_RX_D0P	AE29	I/O	-		MIPI_DPHY_CSI1_RX_D0P	MIPI_DPHY_CSI1_RX_D0P
100	MIPI_DPHY_CSI1_RX_D0N	AE28	I/O	-		MIPI_DPHY_CSI1_RX_D0N	MIPI_DPHY_CSI1_RX_D0N
PIN	iCORE-3576Q38 pin definition (J2)	RK3576 Pin NO.	Pad type	IO Power domain	IO Pull	Function for Main BOARD (EXT-ICORE-3576Q38)	Defual function description
1	VCC5V0_SYS_S5		P	5.0V		VCC5V0_SYS Normal: 5V/150mA Max.:5V/1500mA Min.:5V/5mA	VCC5V0_SYS INPUT Voltage 5.0V +/-5%
3	VCC5V0_SYS_S5		P	5.0V			



Interface definition

5	VCC5V0_SYS_S5		P	5.0V		VCC5V0_SYS	VCC5V0_SYS INPUT Voltage 5.0V +/-5%
7	VCC5V0_SYS_S5		P	5.0V		Normal: 5V/150mA Max.:5V/1500mA Min.:5V/5mA	
9	VCC5V0_SYS_S5		P	5.0V			
11	GND		G	GND		GND	GND
13	GND		G	GND			
15	GND		G	GND			
17	GND		G	GND			
19	PWRON_L		I	5.0V		PWRON_L	PWERON KEY INPUT,Active L
21	VCCA_3V3_S0 (OUTPUT)		P	3.3V		VCCA_3V3_S0	VCCA_3V3_S0 OUTPUT (3.3V, Total Max:100mA)
23	VDC_EXT (Automatic startup INPUT)		I	5.0V		VDC_EXT	PMIC_EN INPUT, Active H
25	VCC_3V3_S3 (OUTPUT)		P	3.3V		VCC_3V3_S3	VCC_3V3_S3 OUTPUT (3.3V, Total Max:500mA)
27	VCC_3V3_S3 (OUTPUT)		P	3.3V		VCC_3V3_S3	
29	NPOR (System Reset Input, Active L)	V29	I/O	1.8V		RESET_L	SYSTEM RESET INPUT, Active L
31	PMIC_EXT_EN_OUT		O	5.0V		NC	PMIC_EXT_EN OUTPUT,Active H
33	REF_CLK0_OUT/AUPLL_CLK_IN_M0/GPIO0_A0_d	V29	I/O	1.8V	DOWN	RTC_INT_L	RTC_INT INPUT, Active L
35	MIPI_TE_M1 / CAN1_TX_M3 / SPI3_MISO_M0 / UART3_CTSN_M0 / SPDIF_RX1_M1 /SAI3_SDO_M2 / ETH0_RXCTL_M1 / ETH1_PPSClk_M0 / VI_CIF_CLK0 / GPIO3_A2_d	1A20	I/O	VCCIO4 (1.8V)	DOWN	UART3_CTSN_M0	UART3_CTSN_M0
37	CAN1_RX_M3 / SPI3_CSN0_M0 /UART3_RTSN_M0 /SPDIF_TX1_M1 / SAI3_SDI_M2 / ETH0_RXD1_M1 / ETH1_PTP_REFCLK_M0 /VI_CIF_CLKI/ GPIO3_A3_d	1A19	I/O	VCCIO4 (1.8V)	DOWN	UART3_RTSN_M0	UART3_RTSN_M0



Interface definition

39	I2C7_SDA_M1 /SPI3_MOSI_M0 /UART3_RX_M0/SAI3_LRCK_M2 /ETH0_MDC_M1/ETH1_PPSTRIG_M0 /VI_CIF_VSYNC /GPIO3_A1_d	1B18	I/O	VCCIO4 (1.8V)	DOWN	UART3_RX_M0	UART3_RX_M0
41	I2C7_SCL_M1/SPI3_CLK_M0/UART3_TX_M0/SAI3_SCLK_M2 /ETH0_MDIO_M1/VI_CIF_HREF / GPIO3_A0_d	1D16	I/O	VCCIO4 (1.8V)	DOWN	UART3_TX_M0	UART3_TX_M0
43	GND		G	GND			
45	I3C1_SCL_M1/CAN1_RX_M0/SPI0_CSN1_M1/UART5_RTSN_M2/JTAG_TCK_M0/SAI3_LRCK_M3/DSM_AUD_RP_M0/FSP11_D2_M0/SDMMC0_D2/ GPIO2_A2_d	A23	I/O	VCCIO_SD (3.3V)	DOWN	SDMMC0_D2 (To SD CARD)	SDMMC0_D2
47	I3C1_SDA_M1/CAN1_TX_M0/UART5_CTSN_M2/JTAG_TMS_M0/SAI3_SDI_M3/DSM_AUD_RN_M0/FSP11_D3_M0/SDMMC0_D3/ GPIO2_A3_d	B23	I/O	VCCIO_SD (3.3V)	DOWN	SDMMC0_D3 (To SD CARD)	SDMMC0_D3
49	I3C1_SDA_PU_M1/SPI0_CLK_M1/I2C5_SCL_M0/UART5_TX_M2/TEST_CLK_OUT/SAI3_SCLK_M3/FSP11_CLK_M0/SDMMC0_CLK/ GPIO2_A5_d	1B21	I/O	VCCIO_SD (3.3V)	DOWN	SDMMC0_CLK (To SD CARD)	SDMMC_CLK (Core board series resistance 22R)
51	PWM2_CH4_M0/SPI0_CSN0_M1/I2C5_SDA_M0/UART5_RX_M2/SAI3_SDO_M3/FSP11_CSN0_M0/SDMMC0_CMD/ GPIO2_A4_d	1A21	I/O	VCCIO_SD (3.3V)	DOWN	SDMMC0_CMD (To SD CARD)	SDMMC0_CMD
53	PWM2_CH3_M0/CAN0_TX_M0/SPI0_MISO_M1/I2C8_SDA_M0/UART7_TX_M2/UART0_TX_M1/SAI3_MCLK_M3/DSM_AUD_LN_M0/FSP11_D1_M0 /SDMMC0_D1/ GPIO2_A1_d	B25	I/O	VCCIO_SD (3.3V)	DOWN	SDMMC0_D1 (To SD CARD)	SDMMC0_D1
55	PWM2_CH2_M0/CAN0_RX_M0/SPI0_MOSI_M1/I2C8_SCL_M0/UART7_RX_M2/UART0_RX_M1/DSM_AUD_LP_M0/FSP11_D0_M0/SDMMC0_D0/ GPIO2_A0_d	B24	I/O	VCCIO_SD (3.3V)	DOWN	SDMMC0_D0 (To SD CARD)	SDMMC0_D0
57	GND		G			GND	GND
59	SDMMC0_PWREN/SDMMC1_DET_N_M2/HDMI_TX_HPDIN_M1/EDP_TX_HPDIN_M1/PWM1_CH2_M0/ GPIO0_B6_d	1Y24	I/O	3.3V	DOWN	SDMMC0_PWREN_H	SDMMC0_PWREN_H
61	SDMMC0_DET_N/SPI2_CSN1_M0/ GPIO0_A7_u	1U21	I/O	1.8V	UP	SDMMC0_DET_L	SDMMC0_DET, Active L
63	MIPI_TE_M2/I2C7_SCL_M2/SPI1_CSN1_M2/UART3_TX_M1/FLEXBUS1_CSN_M3/FLEXBUS1_D14_M0/FLEXBUS0_D13_M0/DSMC_INT0/SAI4_LRCK_M1/CAM_CLK1_OUT_M0/SPDIF_RX0_M1/ GPIO4_A0_d	1B12	I/O	VCCIO5 (3.3V)	DOWN	NC	I2C7_SCL_M2
65	I2C7_SDA_M2/UART3_RX_M1/FLEXBUS0_CSN_M1/FLEXBUS1_D13_M0/ FLEXBUS0_D14_M0/DSMC_INT2/SAI4_SDO_M1/CAM_CLK2_OUT_M0/SPDIF_TX0_M1/VO_POST_EMPTY/ GPIO4_A1_d	1B7	I/O	VCCIO5 (3.3V)	DOWN	NC	I2C7_SDA_M2
67	PWM2_CH7_M3/SPI3_CSN1_M1/UART5_RTSN_M0/FLEXBUS1_CSN_M1 /FLEXBUS1_D12_M0/FLEXBUS0_D15_M0/DSMC_RESETN/SAI4_SCLK_M1/CAM_CLK0_OUT_M0/VO_EBC_SDOE/VO_LCD_CK/ GPIO3_D7_d	1E7	I/O	VCCIO5 (3.3V)	DOWN	CAM0_MCLK	CAM0_MCLK OUTPUT



Interface definition

69	GND		G			GND	GND
71	ETH1_RXD0_M0/SAI4_SDO_M3/UART4_RX_M0/I2C6_SDA_M2/PWM2_CH1_M2/GPIO2_D1_d	1A16	I/O	VCCIO4 (1.8V)	DOWN	UART4_RX_M0	UART4_RX_M0
73	CAM_CLK0_OUT_M1/ETH1_RXD1_M0/SAI4_MCLK_M3/UART6_TX_M1/I3C1_SCL_M0/PWM2_CH2_M2/GPIO2_D2_d	B17	I/O	VCCIO4 (1.8V)	DOWN	WIFI_REG_ON_H	WIFI_REG_ON_H
75	ETH1_RXCTL_M0/UART6_RX_M1/I3C1_SDA_M0/PWM2_CH3_M2/GPIO2_D3_d	B18	I/O	VCCIO4 (1.8V)	DOWN	HOST_WAKE_BT_H	HOST_WAKE_BT_H
77	VI_CIF_D4/ETH1_RXD3_M0/ETH0_PPCLK_M1/SAI2_MCLK_M1/PDM1_CLK1_M0/UART9_TX_M0/SPI1_CSN1_M1/PWM1_CH1_M2/GPIO2_C1_d	1A15	I/O	VCCIO4 (1.8V)	DOWN	BT_WAKE_HOST_H	BT_WAKE_HOST_H
79	VI_CIF_D5/ETH1_RXD2_M0/ETH0_PTP_REFCLK_M1/PDM1_SDI1_M0/UART9_RX_M0/PWM1_CH0_M2/GPIO2_C0_d	A17	I/O	VCCIO4 (1.8V)	DOWN	WIFI_WAKE_HOST_H	WIFI_WAKE_HOST_H
81	VI_CIF_D3/ETH1_RXCLK_M0/ETH0_PPSTRIG_M1/SAI2_SCLK_M1/PDM1_SDI2_M0/UART11_CTSN_M1/SPI1_MOSI_M1/PWM1_CH2_M2/GPIO2_C2_d	1D15	I/O	VCCIO4 (1.8V)	DOWN	HOST_WAKE_WIFI_H	HOST_WAKE_WIFI_H
83	PWM2_CH7_M2/SPI3_CSN1_M0/UART9_CTSN_M0/SPDIF_TX0_M2/SAI0_SDO3_M0/ETH_CLK0_25M_OUT_M1/ETH1_MCLK_M0/CAM_CLK2_OUT_M1/GPIO2_D7_d	1E15	I/O	VCCIO4 (1.8V)	DOWN	GPIO2_D7_d	GPIO2_D7_d
85	VI_CIF_D1/ETH1_TXD3_M0/SAI2_SDO_M1/PDM1_SDI0_M0/UART11_TX_M1/SPI1_CSN0_M1/PWM1_CH3_M2/GPIO2_C4_d	1A13	I/O	VCCIO4 (1.8V)	DOWN	GPIO2_C4_d	GPIO2_C4_d
87	VI_CIF_D0/ETH1_TXCLK_M0/SAI2_SDI_M1/PDM1_CLK0_M0/UART11_RX_M1/SPI1_CLK_M1/PWM1_CH4_M2/GPIO2_C5_d	1C15	I/O	VCCIO4 (1.8V)	DOWN	GPIO2_C5_d	GPIO2_C5_d
89	VI_CIF_D2/ETH1_TXD2_M0/SAI2_LRCK_M1/PDM1_SDI3_M0/UART11_RTSN_M1/SPI1_MISO_M1/PWM0_CH0_M2/GPIO2_C3_d	A15	I/O	VCCIO4 (1.8V)	DOWN	GPIO2_C3_d	GPIO2_C3_d
91	ETH1_TXD1_M0/SAI4_LRCK_M3/UART4_RTSN_M0/I2C5_SDA_M2/PWM0_CH1_M2/GPIO2_C7_d	B15	I/O	VCCIO4 (1.8V)	DOWN	UART4_RTSN_M0	UART4_RTSN_M0
93	ETH1_TXD0_M0/SAI4_SCLK_M3/UART4_CTSN_M0/I2C5_SCL_M2/PWM1_CH5_M2/GPIO2_C6_d	1A14	I/O	VCCIO4 (1.8V)	DOWN	UART4_CTSN_M0	UART4_CTSN_M0
95	ETH1_TXCTL_M0/SAI4_SDI_M3/UART4_TX_M0/I2C6_SCL_M2/PWM2_CH0_M2/GPIO2_D0_d	B16	I/O	VCCIO4 (1.8V)	DOWN	UART4_TX_M0	UART4_TX_M0
97	ISP_PRELIGHT_TRIG_M0/ETH1_MDC_M0/UART6_RTSN_M1/I2C9_SDA_M2/PWM2_CH4_M2/GPIO2_D4_d	1B13	I/O	VCCIO4 (1.8V)		I2C9_SDA_M2	I2C9_SDA_M2
99	ISP_FLASH_TRIGOUT_M0/ETH1_MDIO_M0/UART6_CTSN_M1/I2C9_SCL_M2/PWM2_CH5_M2/GPIO2_D5_d	1B15	I/O	VCCIO4 (1.8V)		I2C9_SCL_M2	I2C9_SCL_M2



Interface definition

2	VCC5V0_SYS_S5		P	5.0V		VCC5V0_SYS Normal: 5V/150mA Max.:5V/1500mA Sleep:5V/5mA	VCC5V0_SYS INPUT Voltage 5.0V +/-5%
4	VCC5V0_SYS_S5		P	5.0V			
6	VCC5V0_SYS_S5		P	5.0V			
8	VCC5V0_SYS_S5		P	5.0V			
10	GND		G	GND		GND	GND
12	GND		G	GND			
14	GND		G	GND			
16	GND		G	GND			
18	VCCA_RK806S (INPUT)		P	5.0V		VCCA_RK806S	RK806S startup circuit power supply
20	VCC_1V8_S3 (OUTPUT)		P	1.8V		VCC_1V8_S3	VCC_1V8_S3 OUTPUT (1.8V, Total Max:500mA)
22	GND		G			GND	GND
24	SATA1_ACTLED_M0/SPI4_MISO_M3 /UART7_RTSN_M0 / PDM0_CLK0_M3 /SAI0_MCLK_M0 / ETH0_RXCLK_M1 / SDMMC1_DET_N_M1 / VI_CIF_D8/ GPIO2_B5_d	1C18	I/O	VCCIO4 (1.8V)	DOWN	SPI4_MISO_M3	SPI4_MISO_M3
26	PCIE1_CLKREQ_N_M0/ SPI4_CLK_M3/UART1_RTSN_M1/PDM0_CLK1_M3/SAI0_SDO2_M0 / ETH0_TXCLK_M1 / SDMMC1_CLK_M1/VI_CIF_D10 /GPIO2_B3_d	1B16	I/O	VCCIO4 (1.8V)	DOWN	SPI4_CLK_M3	SPI4_CLK_M3
28	PCIE0_CLKREQ_N_M0 / SPI4_CSN0_M3 / UART1_CTSN_M1 / PDM0_SDI1_M3 / SAI0_SDI2_M0 / ETH0_TXD3_M1 / SDMMC1_CMD_M1/ VI_CIF_D11 /GPIO2_B2_d	1A17	I/O	VCCIO4 (1.8V)	DOWN	SPI4_CSN0_M3	SPI4_CSN0_M3
30	SATA0_ACTLED_M0/SPI4_MOSI_M3/UART7_CTSN_M0/PDM0_SDI0_M3/SAI0_SDI3_M0 / ETH0_TXD2_M1/SDMMC1_PWREN_M1/VI_CIF_D9/GPIO2_B4_d	A19	I/O	VCCIO4 (1.8V)	DOWN	SPI4_MOSI_M3	SPI4_MOSI_M3
32	GND		G			GND	GND



Interface definition

34	PWM1_CH0_M1/PCIE1_CLKREQN_M1/SPI1_CLK_M0/I2C9_SDA_M1/SAI3_SCLK_M1/SDMMC1_D0_M0/ETH1_RXD2_M1/GPIO1_B4_d	A28	I/O	VCCIO3 (1.8V)	DOWN	SDMMC1_D0_M0 (To SDIO WIFI)	SDMMC1_D0_M0
36	UART3_RX_M2/PDM0_CLK0_M2/SAI3_MCLK_M1/SDMMC1_CLK_M0/ETH1_TXCLK_M1/GPIO1_C1_d	1B22	I/O	VCCIO3 (1.8V)	DOWN	SDMMC1_CLK_M0 (To SDIO WIFI)	SDMMC1_CLK_M0
38	PCIE0_WAKEN_M1/SPI1_CSN0_M0/UART3_RTSN_M2/SAI3_SDI_M1/SDMMC1_D3_M0/ETH1_TXD2_M1/GPIO1_B7_d	A27	I/O	VCCIO3 (1.8V)	DOWN	SDMMC1_D3_M0 (To SDIO WIFI)	SDMMC1_D3_M0
40	PWM1_CH1_M1/PCIE1_WAKEN_M1/SPI1_MOSI_M0/I2C9_SCL_M1/SAI3_LRCK_M1/SDMMC1_D1_M0/ETH1_RXD3_M1/GPIO1_B5_d	B27	I/O	VCCIO3 (1.8V)	DOWN	SDMMC1_D1_M0 (To SDIO WIFI)	SDMMC1_D1_M0
42	PCIE0_CLKREQN_M1/SPI1_MISO_M0/UART3_CTSN_M2/SAI3_SDO_M1/SDMMC1_D2_M0/ETH1_RXCLK_M1/GPIO1_B6_d	1A23	I/O	VCCIO3 (1.8V)	DOWN	SDMMC1_D2_M0 (To SDIO WIFI)	SDMMC1_D2_M0
44	PWM0_CH0_M1/PI1_CSN1_M0/UART3_TX_M2/PDM0_SDI2_M2/SDMMC1_CMD_M0/ETH1_TXD3_M1/GPIO1_C0_d	B26	I/O	VCCIO3 (1.8V)	DOWN	SDMMC1_CMD_M0 (To SDIO WIFI)	SDMMC1_CMD_M0
46	GND		G			GND	GND
48	ETH1_PPSCCLK_M1/SDMMC1_PWREN_M0/FSP11_RSTN_M1/FSP11_CSN1_M1/UART4_RTSN_M1/I2C6_SCL_M1/SPI2_CSN1_M1/PWM1_CH2_M1/GPIO1_C2_u	B29	I/O	VCCIO3 (1.8V)	UP	GPIO1_C2_u	GPIO1_C2_u
50	SPI2_CSN0_M1/I2C6_SDA_M1/UART4_CTSN_M1/FSP11_CSN0_M1/SDMMC1_DET_N_M0/ETH1_PPSTRIG_M1/GPIO1_C3_u	1C23	I/O	VCCIO3 (1.8V)	UP	POW_HOLD	POW_HOLD
52	I2C8_SDA_M1/UART2_RX_M0/PDM0_SDI1_M2/FSP11_D3_M1/ETH1_RXD0_M1/GPIO1_C7_d	1C22	I/O	VCCIO3 (1.8V)	DOWN	NC	NC
54	I2C8_SCL_M1/UART2_TX_M0/PDM0_SDI0_M2/FSP11_D2_M1/ETH1_TXCTL_M1/GPIO1_C6_d	A26	I/O	VCCIO3 (1.8V)	DOWN	NC	NC
56	SPI1_MOSI_M2/UART8_TX_M0/FLEXBUS1_D5/DSMC_DATA3/SAI1_LRCK_M1/VO_EBC_SDDO5/VO_LCDC_D5/GPIO3_C6_d	1D7	I/O	VCCIO5 (3.3V)	DOWN	WIFI_PWR_EN	WIFI_PWR_EN, Active H
58	SPI1_CLK_M2/UART8_RTSN_M0/FLEXBUS1_D4/DSMC_DATA2/SAI1_SCLK_M1/VO_EBC_SDDO4/VO_LCDC_D4/GPIO3_C7_d	1C7	I/O	VCCIO5 (3.3V)	DOWN	NC	NC
60	PWM2_CH2_M3/SPI1_MISO_M2/UART8_RX_M0/FLEXBUS1_D6/DSMC_DATA4/SAI1_SDO0_M1/VO_EBC_SDDO6/VO_LCDC_D6/GPIO3_C5_d	1B9	I/O	VCCIO5 (3.3V)	DOWN	NC	NC
62	PWM2_CH3_M3/SPI1_CSN0_M2/UART8_CTSN_M0/FLEXBUS1_D3/DSMC_DATA1/SAI1_MCLK_M1/VO_EBC_SDDO3/VO_LCDC_D3/GPIO3_D0_d	1C12	I/O	VCCIO5 (3.3V)	DOWN	NC	NC
64	VI_CIF_D6/ETH0_RXD2_M1/SAI0_LRCK_M0/UART7_RX_M0/UART8_CTSN_M1/I2C8_SDA_M2/GPIO2_B7_d	B21	I/O	VCCIO4 (1.8V)	DOWN	NC	NC
66	VI_CIF_D7/ETH1_PTP_REFCLK_M1/ETH0_RXD3_M1/SAI0_SCLK_M0/UART7_TX_M0/UART8_RTSN_M1/I2C8_SCL_M2/GPIO2_B6_d	A21	I/O	VCCIO4 (1.8V)	DOWN	NC	NC



Interface definition

68	GND		G			GND	GND
70	VO_LCDC_D2/VO_EBC_SDDO2/ETH0_RXCLK_M0/SAI2_MCLK_M2/DSMC_CSN2/FLEXBUS0_D11/FLEXBUS1_CSN_M2/SPI4_CLK_M1/I3C1_SDA_PU_M2/GPIO3_D1_d	1A12	I/O	VCCIO5 (3.3V)	DOWN	NC	NC
72	VO_LCDC_D17/VO_EBC_SDCE1/ETH0_RXD0_M0/PDM1_SDI1_M2/DSMC_DATA11/FLEXBUS0_D3/UART9_RX_M1/I2C8_SDA_M3/GPIO3_B2_d	A13	I/O	VCCIO5 (3.3V)	DOWN	GMAC0_RXD0_M0	GMAC0_RXD0_M0
74	VO_LCDC_D20/VO_EBC_VCOM/ETH0_RXCTL_M0/PDM1_CLK1_M2/DSMC_DATA13/FLEXBUS0_D5/UART1_TX_M2/UART10_RTSN_M0/GPIO3_A7_d	B13	I/O	VCCIO5 (3.3V)	DOWN	GMAC0_RXCTL_M0	GMAC0_RXCTL_M0
76	VO_LCDC_D18/VO_EBC_SDCE2/ETH0_RXD1_M0/PDM1_CLK0_M2/DSMC_DATA12/FLEXBUS0_D4/UART10_TX_M0/SPI4_CSN0_M1/PWM1_CH3_M3/GPIO3_B1_d	1A11	I/O	VCCIO5 (3.3V)	DOWN	GMAC0_RXD1_M0	GMAC0_RXD1_M0
78	VO_LCDC_D0/VO_EBC_SDDO0/ETH0_RXD2_M0/SAI2_SDO_M2/DSMC_CSN0/FLEXBUS1_D2/UART2_CTSN_M2/I3C1_SCL_M2/PWM2_CH5_M3/GPIO3_D3_d	B12	I/O	VCCIO5 (3.3V)	DOWN	GPIO3_D3_d	GPIO3_D3_d
80	VO_LCDC_D1/VO_EBC_SDDO1/ETH0_RXD3_M0/SAI2_SDI_M2/DSMC_CSN3/FLEXBUS0_D12/FLEXBUS1_D15_M0/FLEXBUS0_CSN_M3/UART2_RTSN_M2/SPI4_CSN1_M1/I3C1_SDA_M2/PWM2_CH4_M3/GPIO3_D2_d	1A10	I/O	VCCIO5 (3.3V)	DOWN	NC	NC
82	PWM0_CH0_M3/SPI2_MOSI_M2/UART10_RX_M0/FLEXBUS0_D8/DSMC_CSN1/SAI4_MCLK_M1/ETH0_MCLK_M0/VO_EBC_SDCE3/VO_LCDC_D19/GPIO3_B0_d	B14	I/O	VCCIO5 (3.3V)	DOWN	GMAC0_MCLK_M0	GMAC0_MCLK_M0
84	VO_LCDC_D13/VO_EBC_SDDO13/ETH0_TXCLK_M0/DSMC_DQS1/FLEXBUS0_CLK/SPI3_CSN0_M1/PWM0_CH1_M3/GPIO3_B6_d	B11	I/O	VCCIO5 (3.3V)	DOWN	NC	NC
86	VO_LCDC_D16/VO_EBC_SDCE0/ETH0_TXCTL_M0/PDM1_SDI0_M2/DSMC_DATA10/FLEXBUS0_D2/UART9_TX_M1/I2C8_SCL_M3/GPIO3_B3_d	A11	I/O	VCCIO5 (3.3V)	DOWN	GMAC0_TXCTL_M0	GMAC0_TXCTL_M0
88	VO_LCDC_D14/VO_EBC_SDDO14/ETH0_TXD0_M0/SPDIF_TX1_M0/DSMC_DATA8/FLEXBUS0_D0/UART9_CTSN_M1/PWM1_CH5_M3/GPIO3_B5_d	1A9	I/O	VCCIO5 (3.3V)	DOWN	GMAC0_TXD0_M0	GMAC0_TXD0_M0
90	VO_LCDC_D8/VO_EBC_SDDO8/ETH0_TXD2_M0/SAI2_LRCK_M2/DSMC_INT3/FLEXBUS0_D10/FLEXBUS0_CSN_M2/UART11_CTSN_M0/SPI4_MOSI_M1/I2C9_SDA_M3/PWM2_CH1_M3/GPIO3_C3_d	1A8	I/O	VCCIO5 (3.3V)	DOWN	NC	NC
92	VO_LCDC_D15/VO_EBC_SDDO15/ETH0_TXD1_M0/SPDIF_RX1_M0/DSMC_DATA9/FLEXBUS0_D1/UART9_RTSN_M1/PWM1_CH4_M3/GPIO3_B4_d	B10	I/O	VCCIO5 (3.3V)	DOWN	GMAC0_TXD1_M0	GMAC0_TXD1_M0
94	VO_LCDC_D9/VO_EBC_SDDO9/ETH0_TXD3_M0/SAI2_SCLK_M2/DSMC_INT1/FLEXBUS0_D9/UART11_RTSN_M0/SPI4_MISO_M1/I2C9_SCL_M3/PWM2_CH0_M3/GPIO3_C2_d	B9	I/O	VCCIO5 (3.3V)	DOWN	PHY_INT	PHY_INT
96	SAI1_SDO2_M0/SAI1_SDI2_M0/PDM1_SDI2_M1/FLEXBUS1_D14_M1/SPI4_MOSI_M2/UART5_RX_M1/UART6_CTSN_M0/UART2_CTSN_M1/GPIO4_B1_d	B7	I/O	3.3V	DOWN	GMAC0_RSTn	GMAC0_RSTn
98	VO_LCDC_D21/VO_EBC_GDOE/ETH0_MDC_M0/PDM1_SDI2_M2/DSMC_DATA14/FLEXBUS0_D6/UART1_RX_M2/UART10_CTSN_M0/PWM1_CH2_M3/GPIO3_A6_d	1A7	I/O	VCCIO5 (3.3V)	DOWN	GMAC0_MDC_M0	GMAC0_MDC_M0

Interface definition



100	VO_LCDC_D22/VO_EBC_GDSP/ETH0_MDIO_M0/PDM1_SDI3_M2/DSMC_DATA15/FLEXBUS0_D7/UART1_RTSN_M2/SPI2_CSN1_M2/PWM1_CH1_M3/GPIO3_A5_d	A9	I/O	VCCIO5 (3.3V)	DOWN	GMAC0_MDIO_M0	GMAC0_MDIO_M0
-----	---	----	-----	------------------	------	---------------	---------------



T-CHIP INTELLIGENCE TECHNOLOGY



Contact Us
(+86)18688117175



E-mail
global@t-firefly.com



Website
<https://en.t-firefly.com/>



Address
Room 2101, Hongyu Building, #57 Zhongshan 4Rd, East District,
Zhongshan, Guangdong, China.